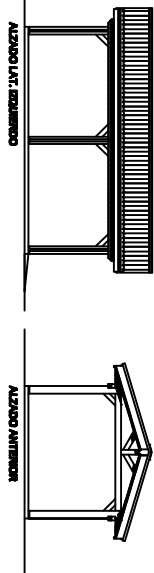
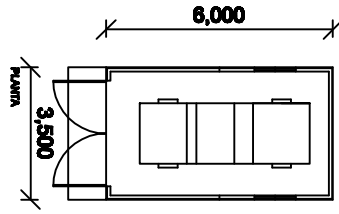
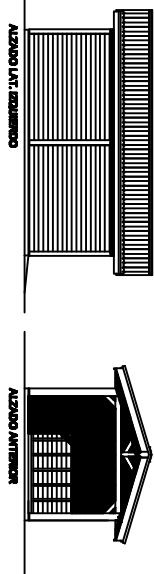
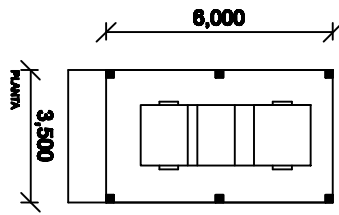


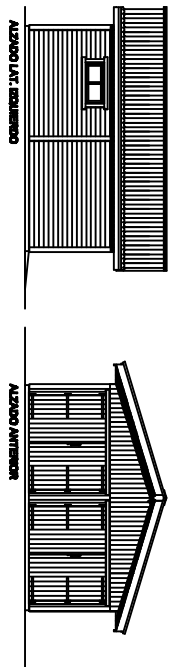
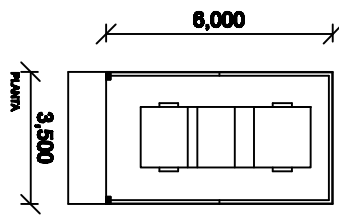
GARAJE TIPO CR  
 MEDIDAS: 3,50 X 6,00  
 SUP. = 21,00 M<sup>2</sup>



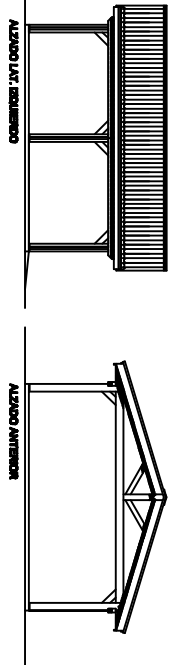
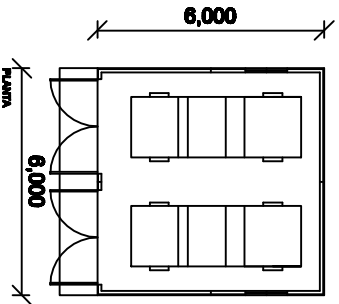
GARAJE TIPO AB  
 MEDIDAS: 3,50 X 6,00  
 SUP. = 21,00 M<sup>2</sup>



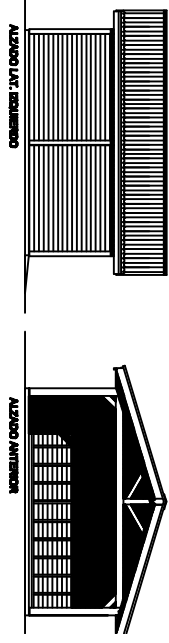
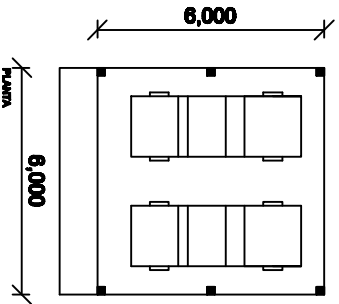
GARAJE TIPO SA  
 MEDIDAS: 3,50 X 6,00  
 SUP. = 21,00 M<sup>2</sup>



GARAJE TIPO CR  
 MEDIDAS: 6,00 X 6,00  
 SUP. = 36,00 M<sup>2</sup>



GARAJE TIPO AB  
 MEDIDAS: 6,00 X 6,00  
 SUP. = 36,00 M<sup>2</sup>



GARAJE TIPO SA  
 MEDIDAS: 6,00 X 6,00  
 SUP. = 36,00 M<sup>2</sup>

